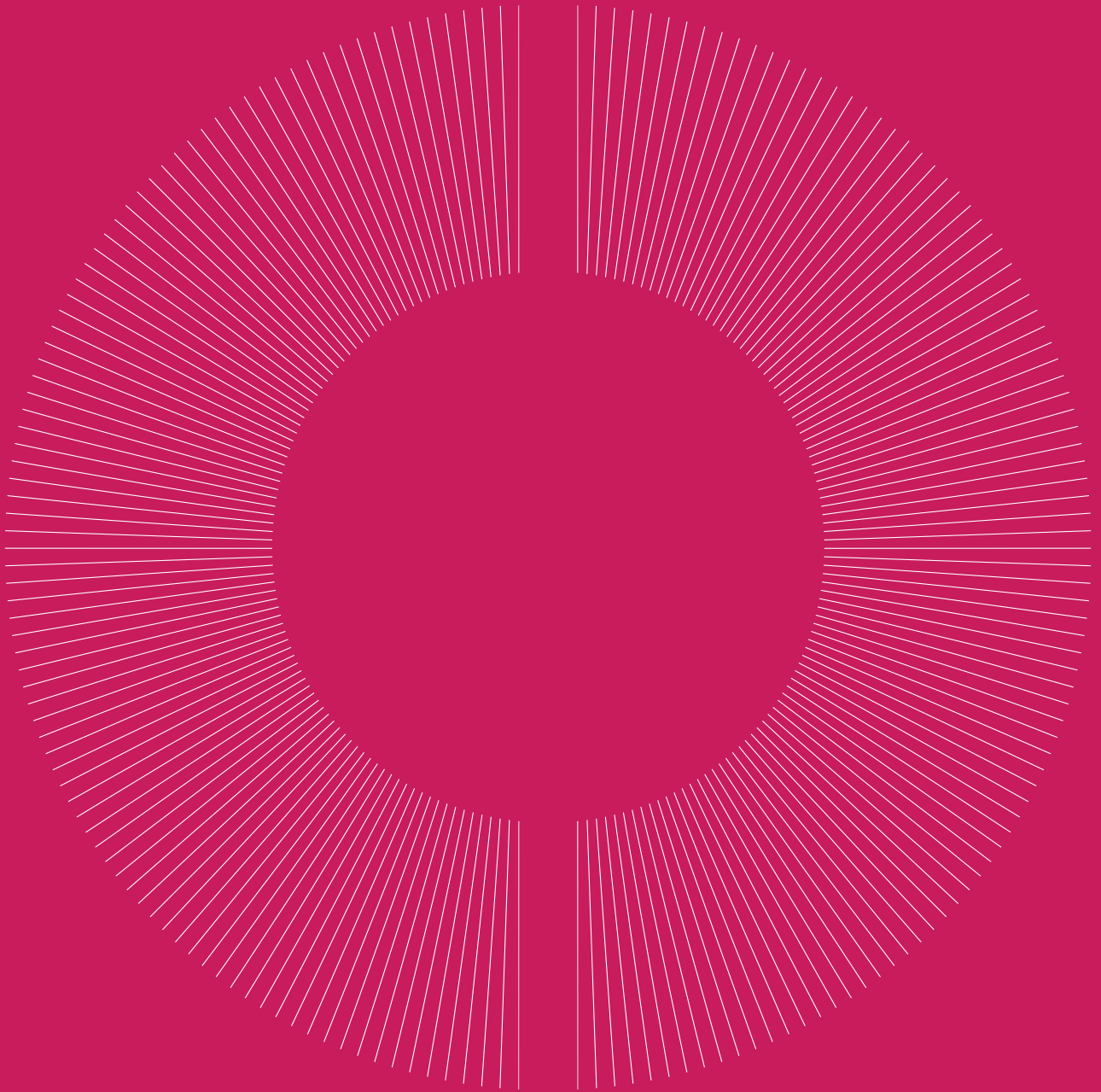


# Schroder International Selection Fund Global Cities



# Schroder ISF\* Global Cities aims to provide long-term income and capital growth by investing in companies that own the best real estate in “Global Cities”.

Please refer to the fund prospectus for the full investment objective and policy.

“

**Global Cities are those which capture the world's attention and investment, they are international hubs for individuals and businesses. It is in these cities you will find world-class universities and enterprises - with governments working hard to ensure they continue to thrive.**

”

## What are Global Cities?

Global Cities are places where people want to live, work and play. They are international hubs for business and culture, characterised by strong infrastructure, diverse economies, a skilled labour force, and high quality of life. As a result, these cities are home to the most in-demand real estate, translating into higher rents and values, the bedrock of real estate investing.

## Why are Global Cities important?

Urbanisation is a powerful multi-decade theme. It's expected that by 2050, nearly 70% of the world's population (compared to 55% today) will reside in urban areas<sup>1</sup>. So knowing which cities stand to benefit from this demographic shift means investors can target the right opportunities. Investing in real estate within these cities gives exposure to a diverse range of sectors (from data centres, self-storage and manufactured homes to conventional areas such as offices, retail and industrial) and access to economies that are expected to outperform national averages.

## Risk Considerations

Your capital is at risk when investing. Past Performance is not a guide to future performance and may not be repeated. Please refer to page 4 of this document for more detail on the key risk considerations associated with this fund.

## Highlights

### A low correlation to other asset classes

Real estate has the capacity to deliver long-term attractive returns and displays a low correlation to other asset classes, which makes it a valuable diversifier for a balanced portfolio.

### The liquidity of a mutual fund

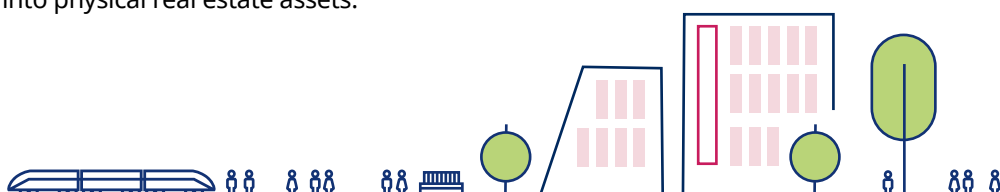
The strategy offers global, immediate real estate exposure with the liquidity of a mutual fund and lower transaction costs compared to investing directly into physical real estate assets.

### Stronger pricing power

Access to real estate in the world's leading cities where supply is constrained, giving strong pricing power.

### Inflation protection

Inflation protection through dividend yields: rents offer reversionary potential as well as commonly rising in line with inflation.



<sup>1</sup>Source: World Bank, as at 2022.

\*Schroder International Selection Fund is referred to as Schroder ISF throughout this document.

## Investment process

### Using data to identify opportunities

We analyse approximately six million data points to identify companies that own the most economically productive assets across the strongest global cities. Our scoring system uses:

- Company city score: aggregate score of all the assets owned by a company, dependent on which cities those assets are in
- Transport infrastructure score (TIS): proximity to a transport node and the usage level of the transport node itself
- Thousands of data points covering 9bj Jfcba YbHJz-bbcj Uhjcb UbX 9Wtbcba J factors.

### Investing throughout the market cycle

We analyse each company to identify the pillars of a solid investment: rental growth, low leverage and good management. This means that through the cycle, the companies we favour should continue to grow revenues and provide strong shareholder returns.

### Looking for higher quality companies

We have a strong emphasis on companies which will benefit from the structural drivers of growth; urbanisation, owning unique real estate, technology and demographics. We believe that higher quality companies continue to offer long-term upside due to their exposure to these drivers as well as the global mega trends which we see appearing around the world.

## Key information

ISIN code LU0224508324

Bloomberg code SCHGPSA:LX

Fund launch date 31 October 2005

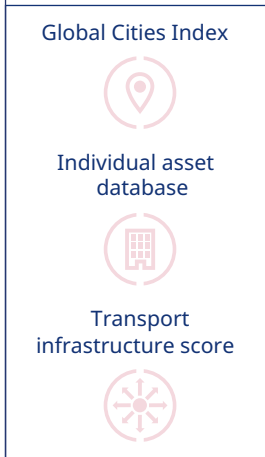
Fund base currency USD

All information in the table above is for the A Accumulation share class, for further share class information please see the prospectus.

### Investment process diagram

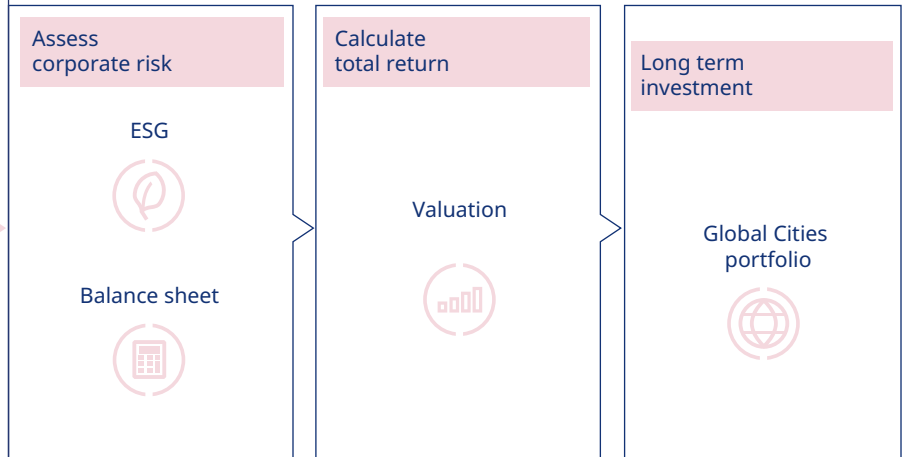
#### Stage 1: Quantitative analysis

We utilise over six million data points to narrow down our investment universe to a long-term index of around 270 companies with the most valuable real estate.

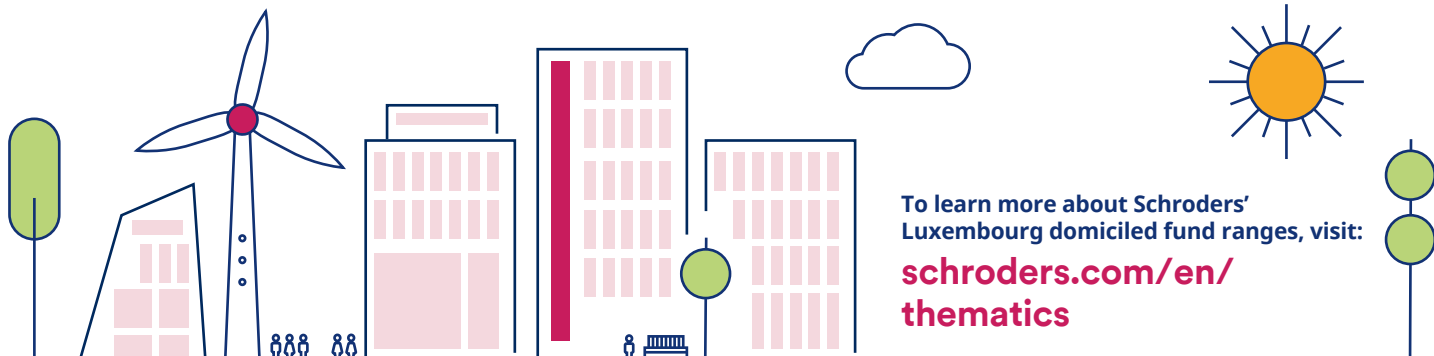


#### Stage 2: Risk and valuation analysis

We evaluate the corporate strength (ESG, balance sheet and liquidity) of a company and the valuation to decide what to invest in, and its weight within the portfolio.



Source: Schroders, 2023.



To learn more about Schroders' Luxembourg domiciled fund ranges, visit:

[schroders.com/en/thematics](https://schroders.com/en/thematics)

## Risk Considerations

**Contractual risk:** The fund may have contractual agreements with counterparties. If a counterparty is unable to fulfil their obligations, the sum that they owe to the fund may be lost in part or in whole.

**Currency risk:** The fund may invest in assets denominated in currencies other than the fund's base currency. Fluctuations in exchange rates may impact the value of the fund's investments.

**Hedging risk:** The hedging of the share class may not be fully effective and residual currency exposure may remain. The cost associated with hedging may impact performance and potential gains may be more limited than for unhedged share classes.

**Derivatives risk:** Derivatives may be used to manage the portfolio efficiently. A derivative may not perform as expected, may create losses greater than the cost of the derivative and may result in losses to the fund.

**Interest rate risk:** The transition of the financial markets away from the use of interbank offered rates (IBORs) to alternative reference rates may impact the valuation of certain holdings and disrupt liquidity in certain instruments. This may impact the investment performance of the fund.

**Liquidity risk:** In difficult market conditions, the fund may not be able to sell a security for full value or at all. This could affect performance and could cause the fund to defer or suspend redemptions of its shares.

**Performance risk:** Investment objectives express an intended result but there is no guarantee that such a result will be achieved. Depending on market conditions and the macro economic environment, investment objectives may become more difficult to achieve.

**Sustainability risk:** The fund has the objective of sustainable investment. This means it may have limited exposure to some companies, industries or sectors and may forego certain investment opportunities, or dispose of certain holdings, that do not align with its sustainability criteria chosen by the investment manager. The fund may invest in companies that do not reflect the beliefs and values of any particular investor.

**Higher volatility risk:** The price of this fund may be volatile as it may take higher risks in search of higher rewards.

**Market risk:** The value of investments can go up and down and an investor may not get back the amount initially invested.

## Important information

This document does not constitute an offer to anyone, or a solicitation by anyone, to subscribe for shares of Schroder International Selection Fund (the "Company"). Nothing in this document should be construed as advice and is therefore not a recommendation to buy or sell shares. An investment in the Company entails risks, which are fully described in the prospectus.

Subscriptions for shares of the Company can only be made on the basis of its latest Key Information Document and prospectus, together with the latest audited annual report (and subsequent unaudited semi-annual report, if published), copies of which can be obtained, free of charge, from Schroder Investment Management (Europe) S.A.

Schroders may decide to cease the distribution of any fund(s) in any EEA country at any time but we will publish our intention to do so on our website, in line with applicable regulatory requirements.

The fund has the objective of sustainable investment within the meaning of Article 9 of Regulation (EU) 2019/2088 on Sustainability-related Disclosures in the Financial Services Sector (the "SFDR"). Any reference to sectors/countries/stocks/securities are for illustrative purposes only and not a recommendation to buy or sell any financial instrument/securities or adopt any investment strategy.

Past Performance is not a guide to future performance and may not be repeated.

The value of investments and the income from them may go down as well as up and investors may not get back the amounts originally invested. Exchange rate changes may cause the value of investments to fall as well as rise.

Schroders has expressed its own views and opinions in this document and these may change.

Schroders will be a data controller in respect of your personal data. For information on how Schroders might process your personal data, please view our Privacy Policy available at [www.schroders.com/en/privacy-policy/](http://www.schroders.com/en/privacy-policy/); or on request should you not have access to this webpage.

A summary of investor rights may be obtained from <https://www.schroders.com/en/lu/private-investor/footer/complaints-handling/>; For your security, communications may be recorded or monitored.

For Luxembourg, these documents may be obtained in English, free of charge, from the following link: [www.eifs.lu/schroders](http://www.eifs.lu/schroders). Issued by Schroder Investment Management (Europe) S.A., 5, rue Höhenhof, L-1736 Senningerberg, Luxembourg. Registration No B 37.799. 603764



EST. 1804

**Schroder Investment Management (Europe) S.A**  
5, rue Höhenhof, 1736 Senningerberg, Luxembourg  
T +352 341 342 444

[schroders.com/en/lu](http://schroders.com/en/lu)

[@schroders](https://twitter.com/schroders)